

# 典型 xEV 应用

LYB 的高新材料业务团队为汽车行业提供了广泛的材料解决方案和专业知识，以满足客户的各种需求，并为其创造更多附加价值。

## 电力电子设备（BMS、MSD等）和高压连接器

### Schulamid 6/66 GF30 V0 无卤素 (PA6/PA66 GF30 V0)

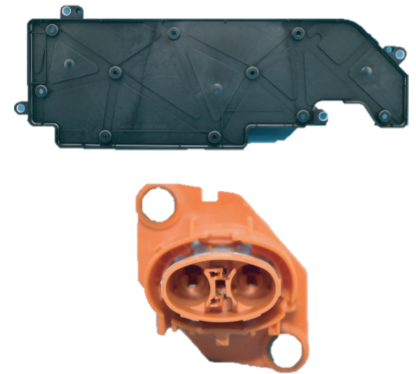
- 优异的自熄效能和良好的机械性能
- 符合严格的电气应用安全要求

### Schulaketon GF30 4DE OR (POK) (插线板)

- 拉伸强度和模量高，冲击强度高
- 非常好的电气性能（CTI>600V、高电阻率等）
- UL94 V0/0.4mm、GWFI 960°C、GWIT 825°C

### PCR 解决方案

- PBT/r-PET 具有低碳足迹和高成本竞争力



## 电池组结构部件（电池框、托盘、端板/侧板、CCS支架等）

### Polyflam RPP 4220/4225/4230 (PP+GF20/25/30)

- PP-Homo UL94 V0 无卤素，有不同颜色可供选择
- CTI>600V，符合 WEEE 和 ROHS 规定



## 挤压母线

### Schulaketon E OR (POK)

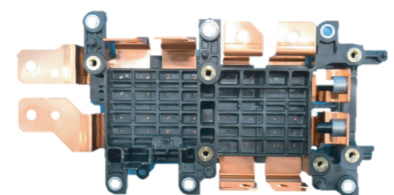
- 与 PA12 相比具有较高的耐热性（熔点：198C 对 178C）
- 与 PA12 相比，拉伸应变能力更强（35%vs.cond.12%）
- 更好的电气绝缘性能
- 低碳足迹和具有竞争力的成本



## 电子驱动装置（直流母线、交流母线、相位母线、滤波器支架、电容器外壳、IGBT/SiC 冷却支架等）

### Schulatec 抗冲击改性 PPS GF30/GF40/MGF50

- 抗冲击改性，具有优异的抗热震性
- 极高的耐热性
- 固有出色的耐化学性（ATF 油等）



# 关于我们

我们是利安德巴赛尔——全球化工行业的头部企业，为可持续发展的日常生活创造解决方案。通过先进的技术和专注的投资，我们正在助力一个循环和低碳经济。在我们所有的工作中，我们的目标是为我们的客户、投资者和社会解锁价值。作为全球聚合物生产和聚烯烃技术的头部企业，我们研发、生产和销售高品质的创新产品，其应用范围从可持续交通和食品安全到清洁水和优质医疗。欲了解更多信息，请访问 [www.lyondellbasell.com](http://www.lyondellbasell.com) 或在 LinkedIn 上关注 @LyondellBasell，或关注微信公众号“利安德巴赛尔”。

# 联系我们

北京办公室

北京市朝阳区金和东路20号正大中心北塔1006

+86 10 5632 3103

上海办公室

中国上海市浦东新区陆家嘴环路479号

上海中心大厦24层2401-2405室

+86 21 6081 9884

广州办公室

广州市天河区天河路230号万菱国际中心3708

+86 20 2883 9071



扫码关注利安德巴赛尔  
1688官方旗舰店



扫码关注利安德巴赛尔  
微信账号

## 免责声明

Before using a product sold by a company of the LyondellBasell family of companies, users should make their own independent determination that the product is suitable for the intended use and can be used safely and legally.

SELLER MAKES NO WARRANTY; EXPRESS OR IMPLIED (INCLUDING ANY WARRANTY OF MERCHANTABILITY OR FITNESS FOR A PARTICULAR PURPOSE OR ANY WARRANTY) OTHER THAN AS SEPARATELY AGREED TO BY

THE PARTIES IN A CONTRACT. This product(s) may not be used in: (i) any U.S. FDA Class I, Health Canada Class I, and/or European Union Class I Medical Devices, without prior notification to Seller for each specific product and application; or (ii) the manufacture of any of the following, without prior written approval by Seller for each specific product and application: (1) U.S. FDA Class II, Health Canada Class II or Class III, and/or European Union Class II Medical Devices; (2) film, overwrap and/or product packaging that is considered a part or component of one of

the aforementioned Medical Devices; (3) packaging in direct contact with a pharmaceutical active ingredient and/or dosage form that is intended for inhalation, injection, intravenous, nasal, ophthalmic (eye), digestive, or topical (skin) administration; (4) tobacco related products and applications; (5) electronic cigarettes and similar devices; and (6) pressure pipe or fittings that are considered a part or component of a nuclear reactor. (iii) Additionally, the product(s) may not be used in: (1) U.S. FDA Class III, Health Canada Class IV, and/or European Class III Medical Devices; (2) applications involving permanent implantation into the body; (3) life-sustaining medical applications; and (4) lead, asbestos or MTBE related applications. All references to U.S. FDA, Health Canada, and European Union regulations include another country's equivalent regulatory classification. Users should review the applicable Material Safety Data Sheet before handling the product.

Schulamid, Schulaketon, Schulatec and Polyflam are trademarks owned and/ or used by the LyondellBasell family of companies. More information about LyondellBasell can be found at [www.lyb.com](http://www.lyb.com).

